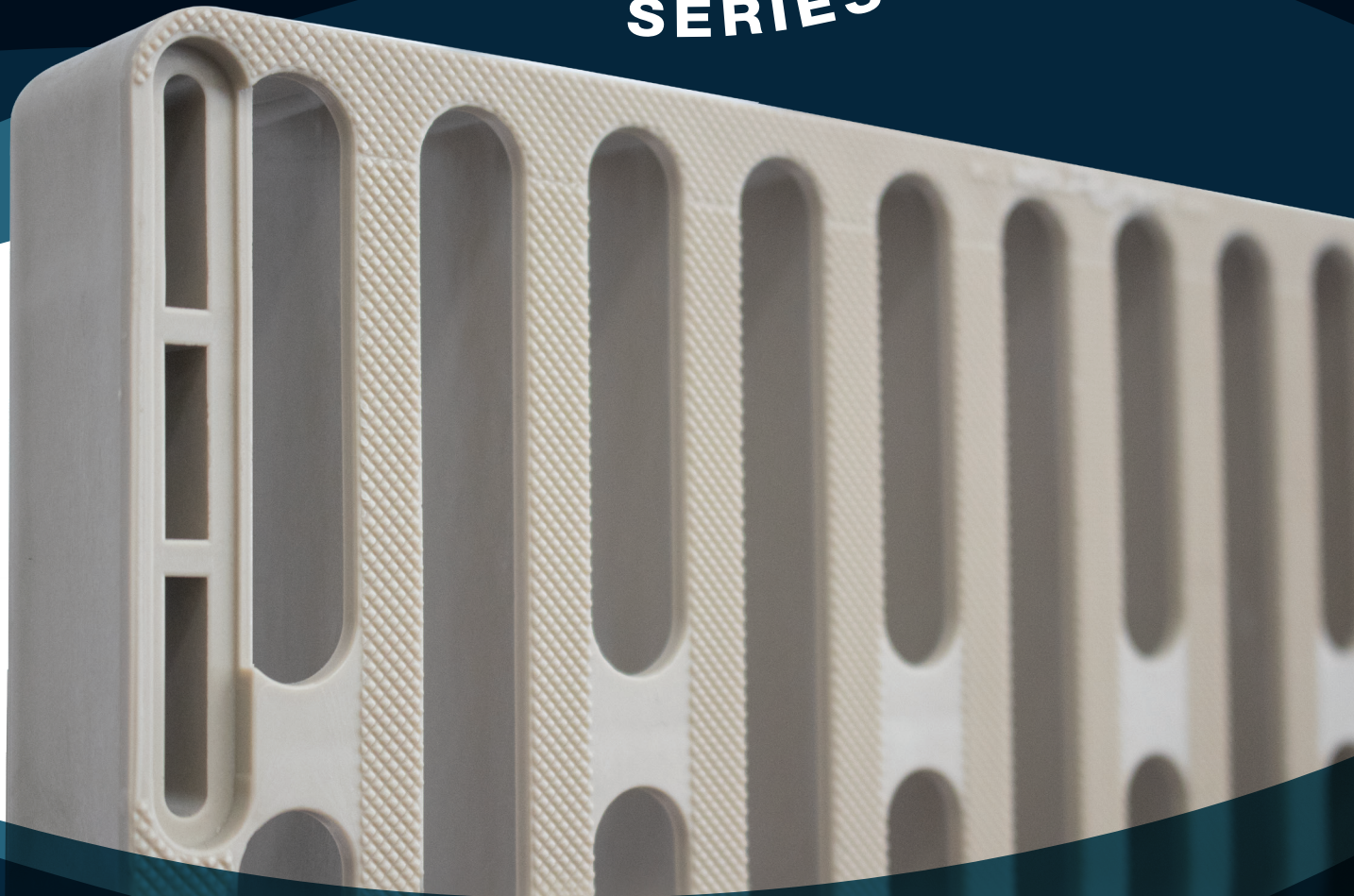


IMPACT

SERIES



DESIGNED AND MANUFACTURED BY

THRU-~~F~~LOW

PREMIUM **DECKING** SOLUTIONS

THRUFLOW™ QUALITY AT AN EVERYDAY PRICE!

Building off the success of our Legacy panels, our Impact Series combines our trademark eco-friendly, maintenance-free design with consumer-first pricing, so that everyone can enjoy our products. The affordability of our Impact Series gives you one less thing to worry about, so you can truly relax and go with the flow.

At ThruFlowTH we believe that a lesser price point shouldn't mean fewer features or lower quality. The Impact Series include the same traits that make our Legacy panel such a success with consumers:

- ✓ Easy to assemble
- ✓ Maintenance free
- ✓ Non-slip
- ✓ UV-resistant
- ✓ Lifetime Limited Warranty

IMPACT	
MATERIAL	Base material is non-reinforced virgin polypropylene
SIZE	1' x 3', 1' x 4', 1' x 5'
THICKNESS	All Panels 1.2" thick
LOAD	All panel sizes exceed 1,300 lbs load capacity surpassing the commercial construction requirements
COLOURS	Light Grey, Maple
ULTRAVIOLET PROTECTION	Industry leading UV protection
LIGHTWEIGHT	On a per sq. ft. basis, ThruFlow TH is 70% lighter than other decking products: 1.4 lbs/ft ²
SURFACE AREA	50%
SAFETY	360° engineered non-slip surface
SUBSTRUCTURE	3' panel - 18" centers 4' panel - 16' centers 5' panel - 15' centers
THRUFLOW TM WARRANTY	Lifetime Limited Warranty

Visit www.thruflow.com to find a dealer near you, Or contact us at:

THRUFLOW

PREMIUM DECKING SOLUTIONS



THRUFLOW.COM

☎ 888-478-3569

✉ sales@thruflow.com